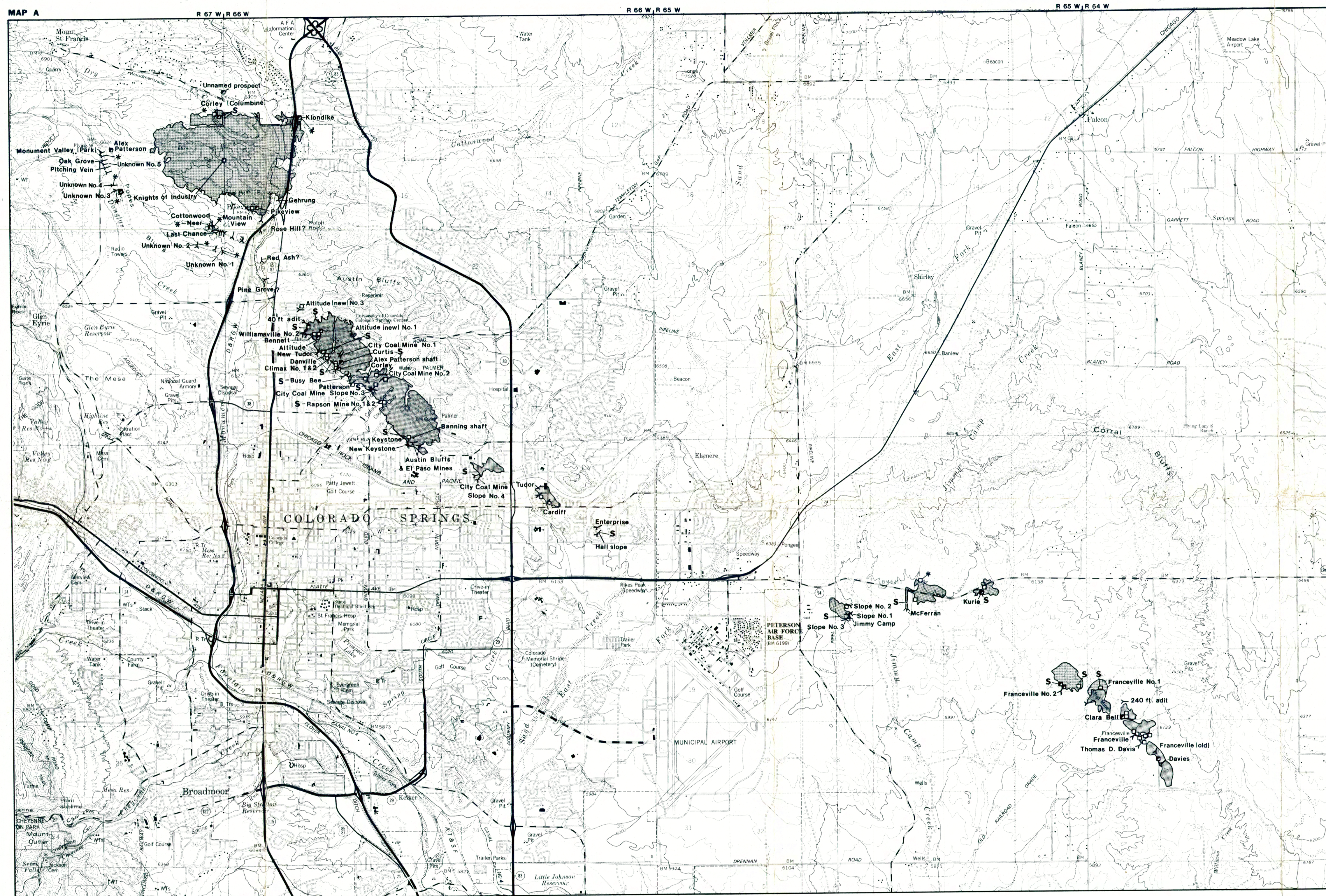


Colorado Front Range Inactive Coal Mine Data and Subsidence Information El Paso County

by J. E. Turney and L. Murray-Williams



EXPLANATION

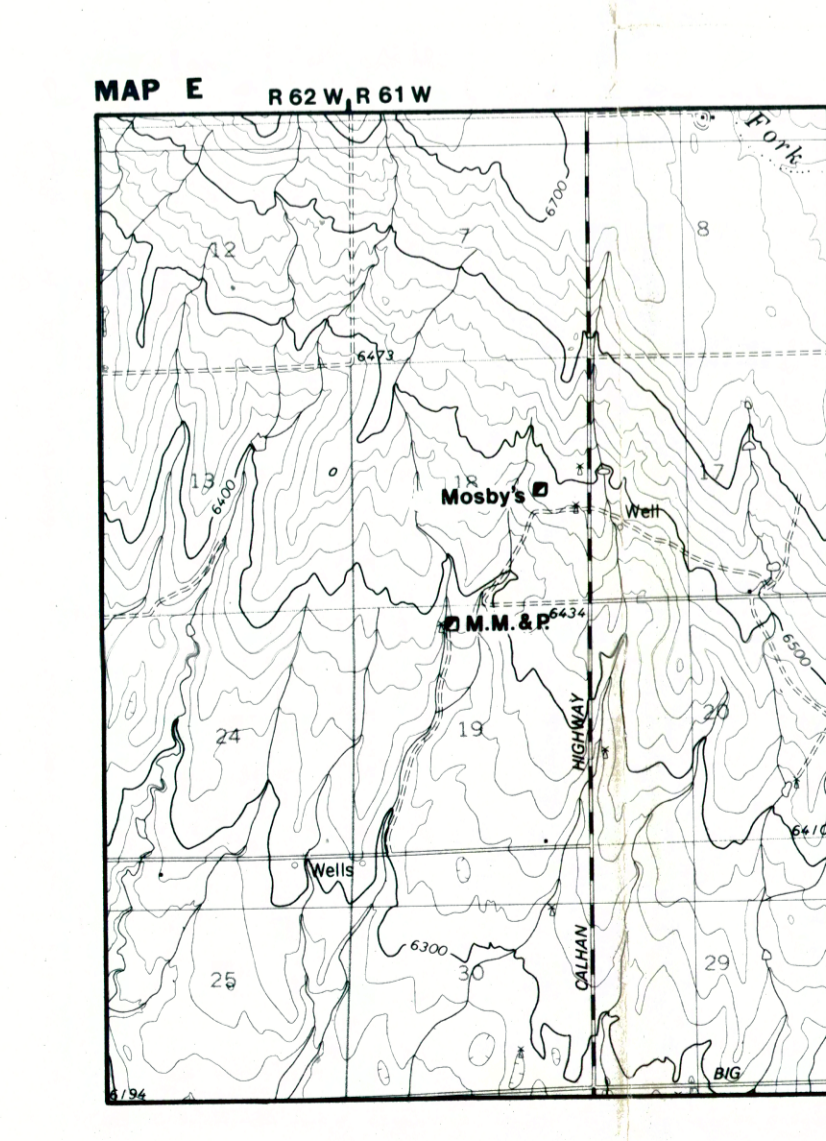
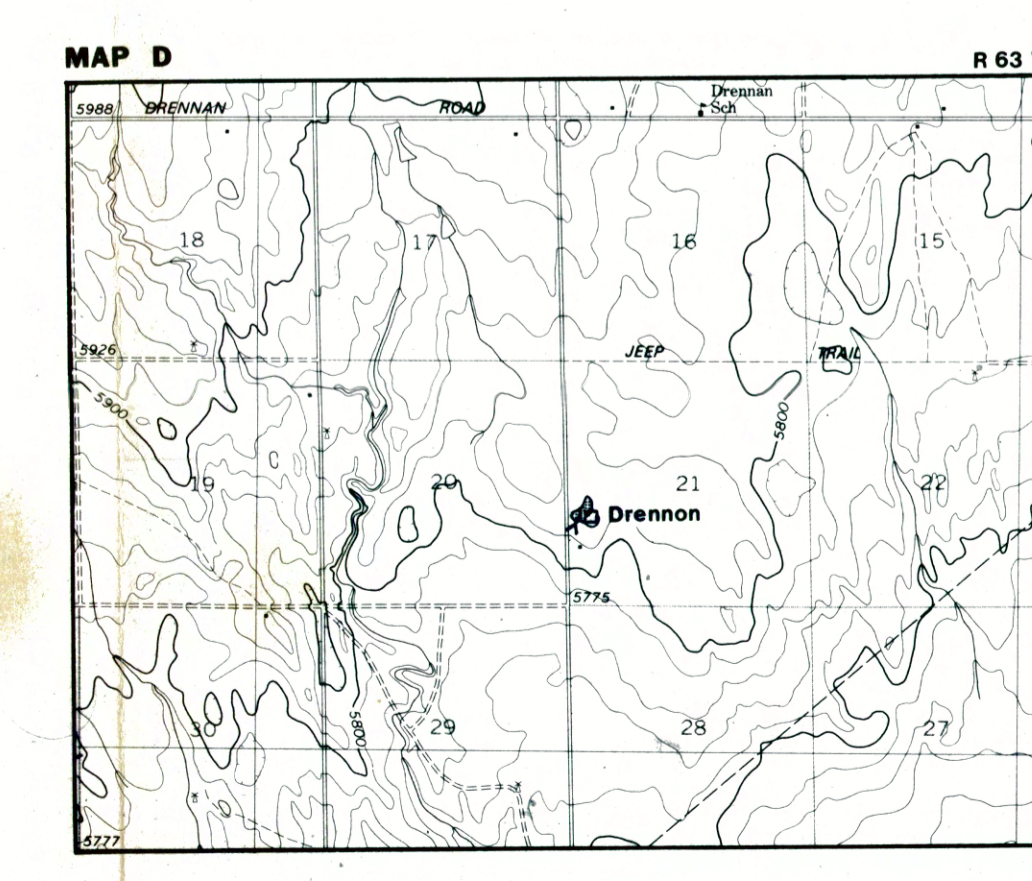
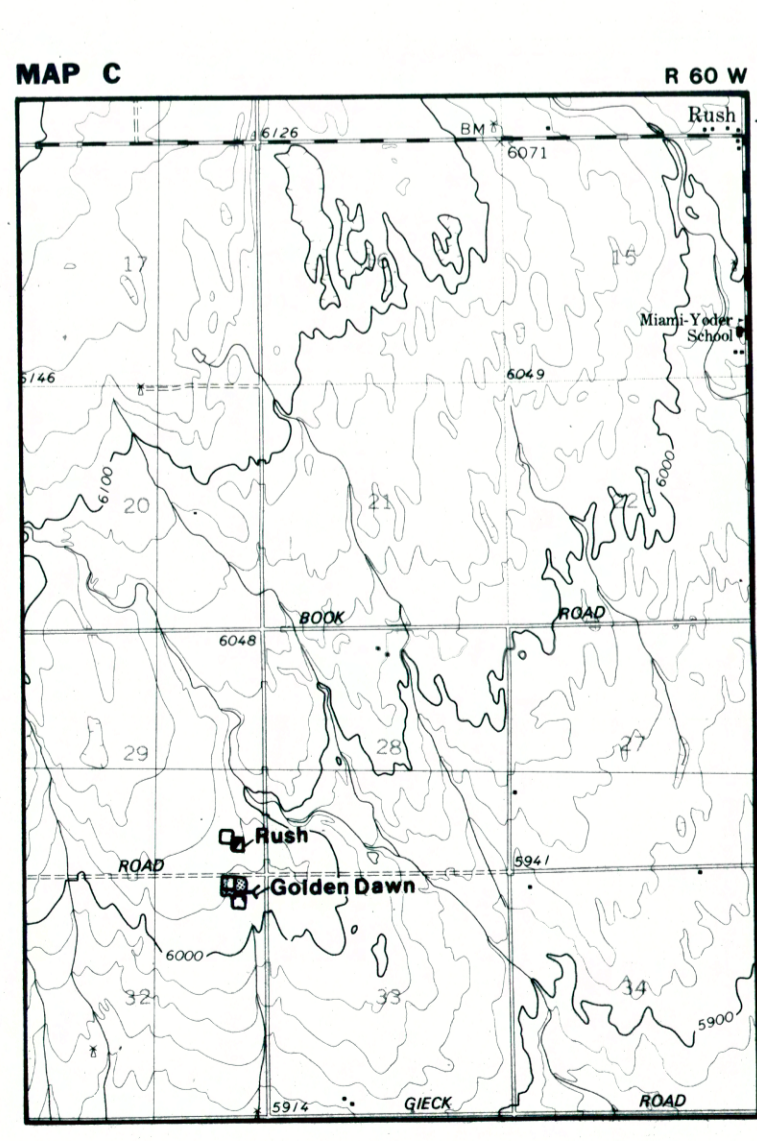
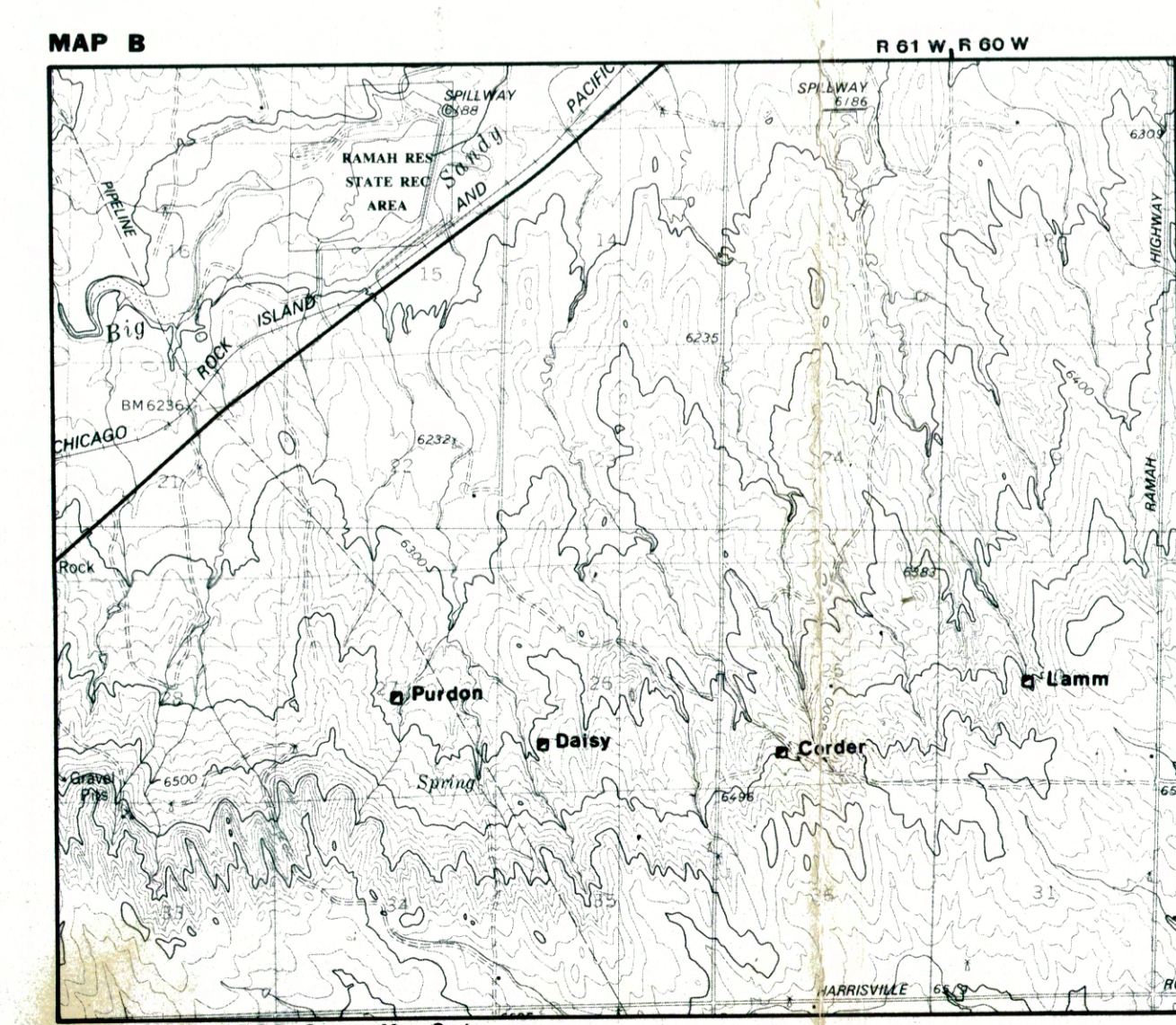
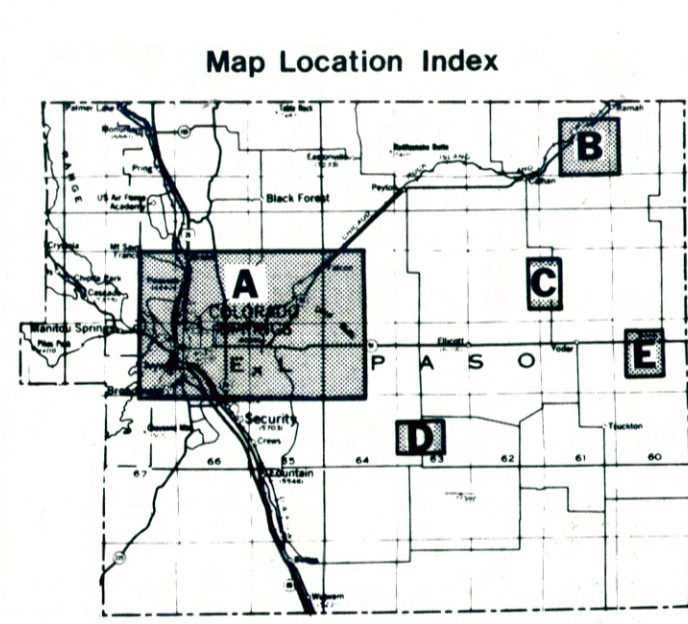
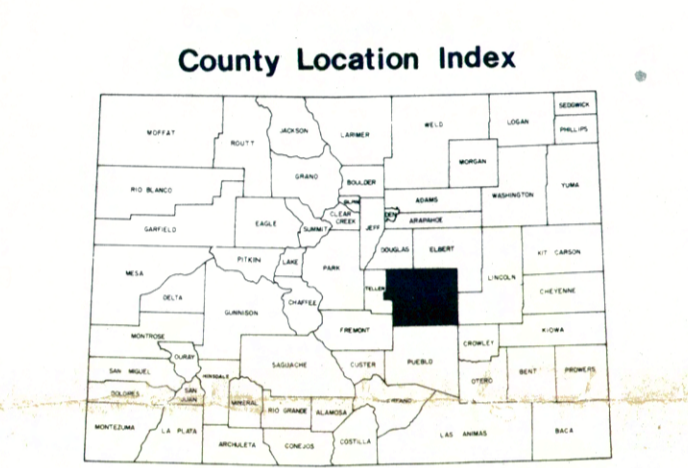
- Mine shaft
- 3 Mine shaft - multiple openings
- Air shaft
- 2 Air shaft - multiple openings
- Y Adit
- Y-4 Adit - multiple openings
- ? Uncertain location
- S Feature location other than known mine
- Undersided area
- ⊖ Vertical or near vertical undersided seam
- - - Fault, dashed where inferred

UNIQUE FEATURES

- Z Multiple mining zones
- * Mine opening information
- S Subsidence features
- F Mine fire
- D Mine drainage

ACKNOWLEDGMENT

This study was funded by U.S. Government Grant No. G5127081, Division of Mined Land Reclamation, Inactive Mine Program, Colorado Department of Natural Resources



Base map from U.S.G.S. County Map Series

